

# Weekend Winter Weather Briefing

February 6, 2026  
5:00 AM EST

For Delaware, New Jersey, Eastern Pennsylvania, Eastern Shore of Maryland

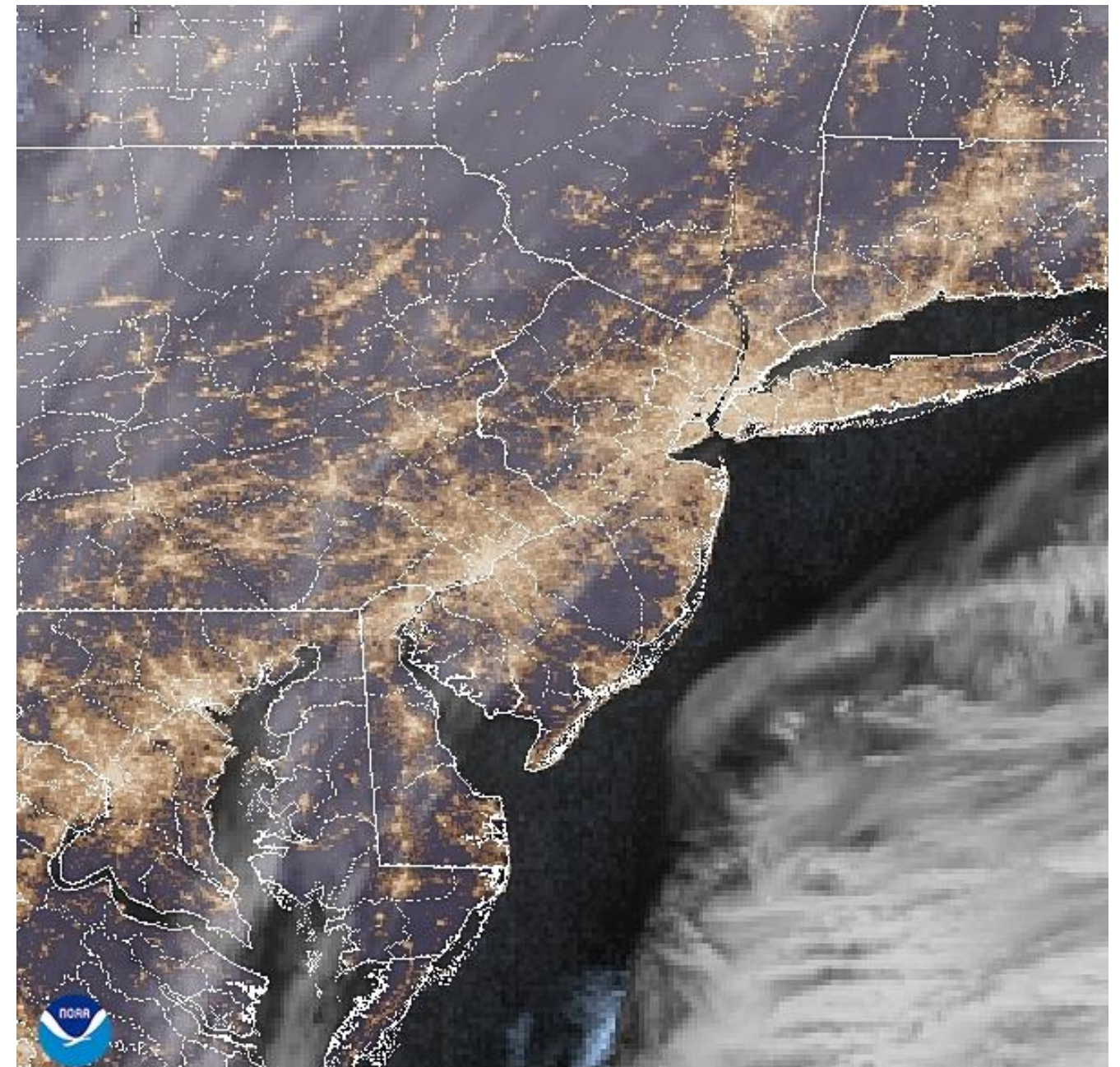
## Decision Support Briefing #2

→ As of 4:10 AM February 6, 2026

NEW

### Important Updates

- An **Extreme Cold Warning** is now in effect for the entire area for Saturday into Sunday.
- A **High Wind Warning** is now in effect for Delmarva, far southern NJ, and much of the NJ Coastal Plain for Saturday.
- A **Wind Advisory** is now in effect for the southern Poconos, southeast Pennsylvania, and the rest of NJ.
- A **Storm Warning**, **Gale Warning**, and a **Heavy Freezing Spray Warning** are in effect for portions of the Atlantic and Delaware Bay coastal waters from 6 AM Saturday through 6 AM Sunday.
- A period of light snow is expected tonight into early Saturday morning, including the potential for snow squalls early Saturday morning.



06 Feb 2026 07:40Z - NOAA/NESDIS/STAR - PHI - GEOCOLOR Composite

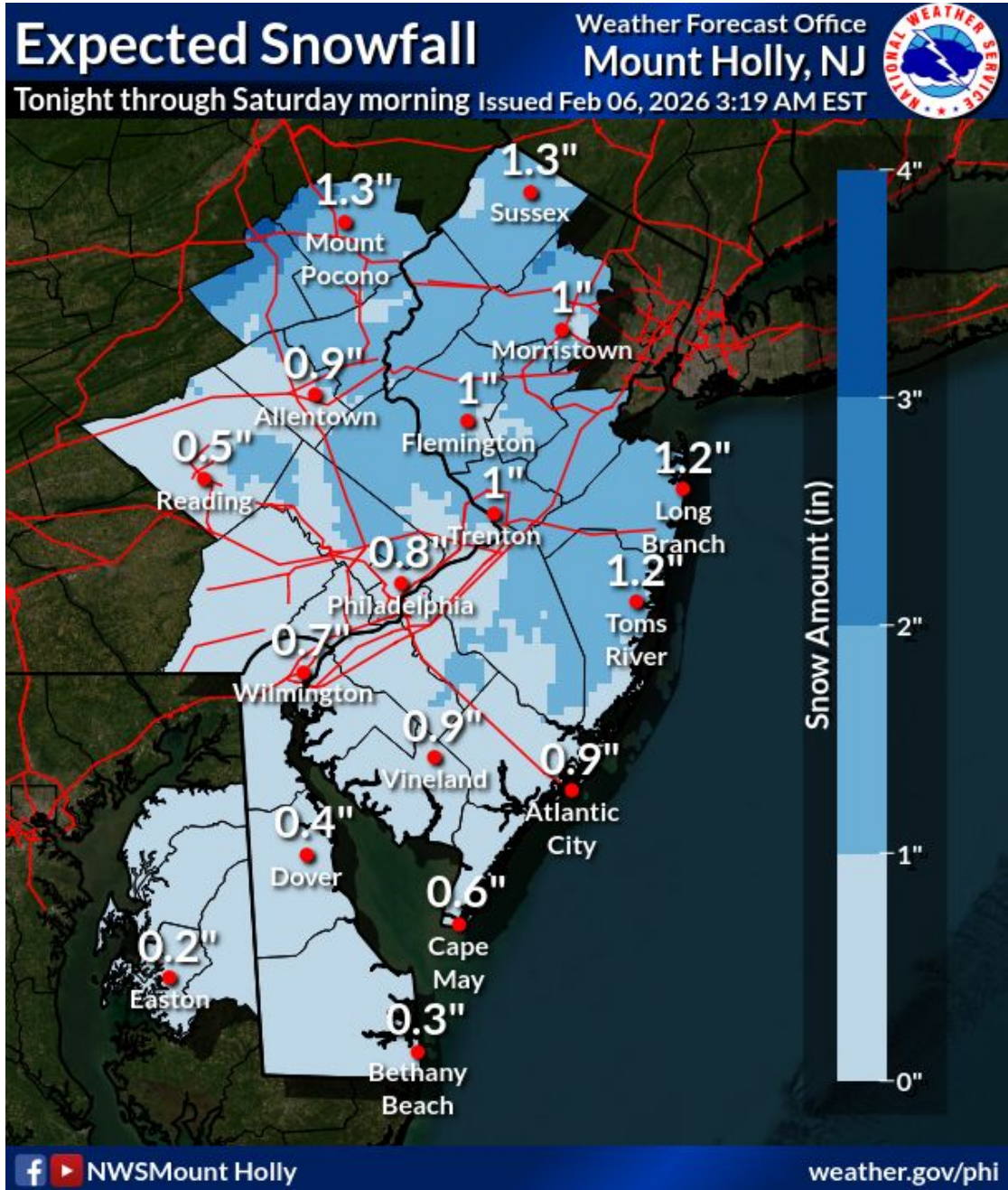




# Light Snow Expected

February 6, 2026  
5:00 AM EST

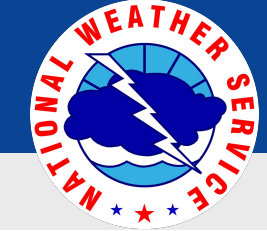
Friday Night through Saturday Morning



## Key Messages:

- Light accumulating snowfall beginning as early as 7 PM this evening, spreading across the region from northwest to southeast into the evening and overnight. Snowfall will largely end around 7 AM Saturday. Most likely period of snowfall accumulation will be between midnight and 6 AM.
- A brief period of heavier snow showers or snow squalls possible early Saturday morning through around dawn. Otherwise, snowfall rates will remain generally below 0.5" per hour.
- Snowfall amounts of a coating to around an inch are expected. Despite the light accumulations, gusty winds and low visibilities within any snow squalls could lead to dangerous travel.

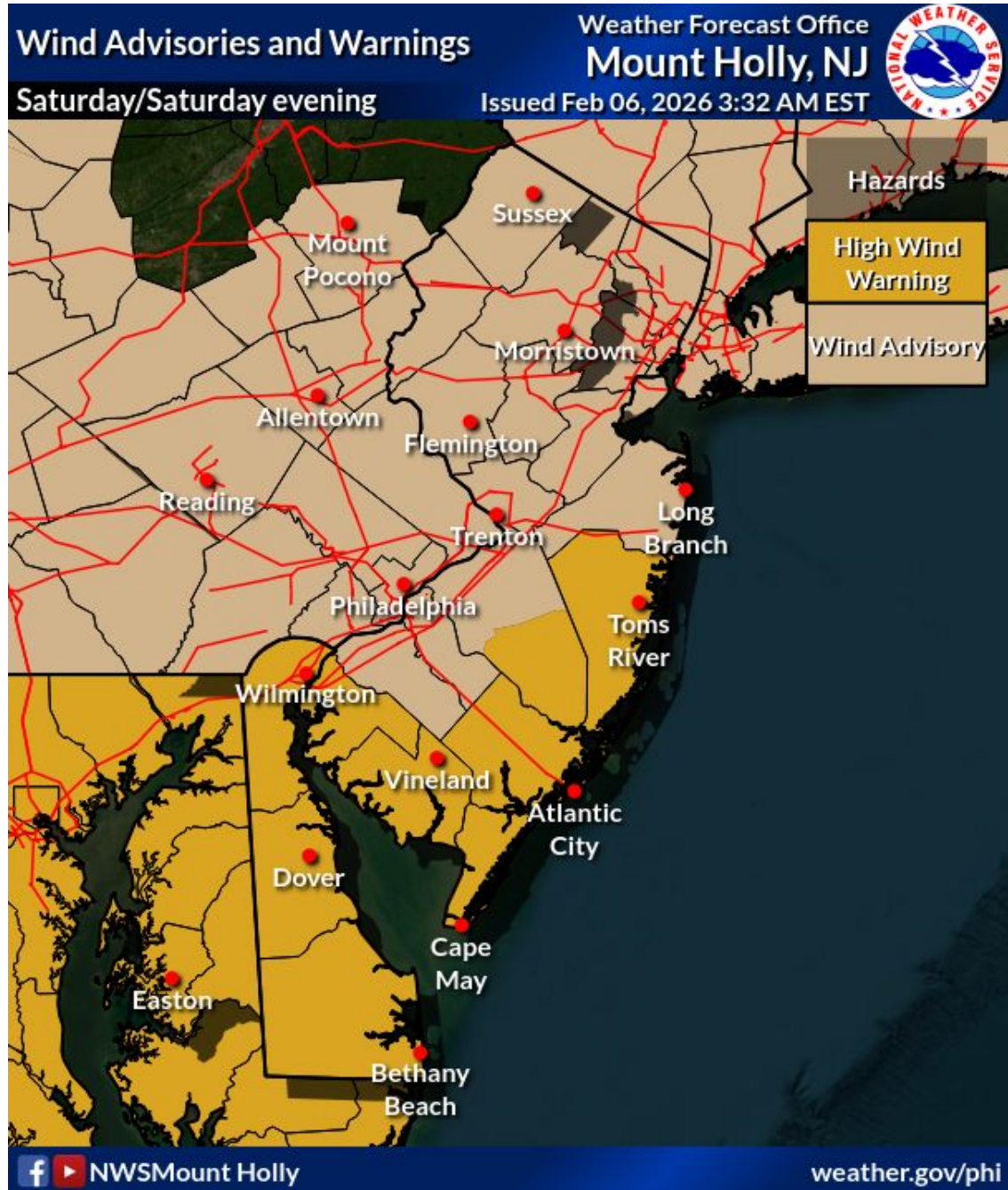




# Windy and Very Cold

February 6, 2026  
5:00 AM EST

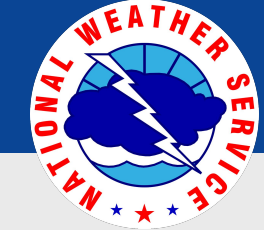
Saturday through Sunday



## Key Messages:

- Northwest winds increasing to 20-35 mph, with gusts of 40-60 mph expected Saturday morning through evening. Scattered power outages and tree damage possible. A **High Wind Warning** is now in effect for coastal southern New Jersey southward into the Delmarva from 8 AM to 9 PM Saturday. A **Wind Advisory** is now in effect for the southern Poconos, southeast Pennsylvania and the rest of New Jersey. Winds gradually diminishing late Saturday night through Sunday.
- The combination of very cold air temperatures and strong winds will lead to **very dangerous** wind chills of  $-10^{\circ}$  to  $-20^{\circ}$ , with values as low as  $-25^{\circ}$  expected across the Poconos Saturday through Sunday morning. An **Extreme Cold Warning** is now in effect for the entire area Saturday through Sunday morning.
- *High winds leading to power outages combined with extreme cold can be very dangerous!*

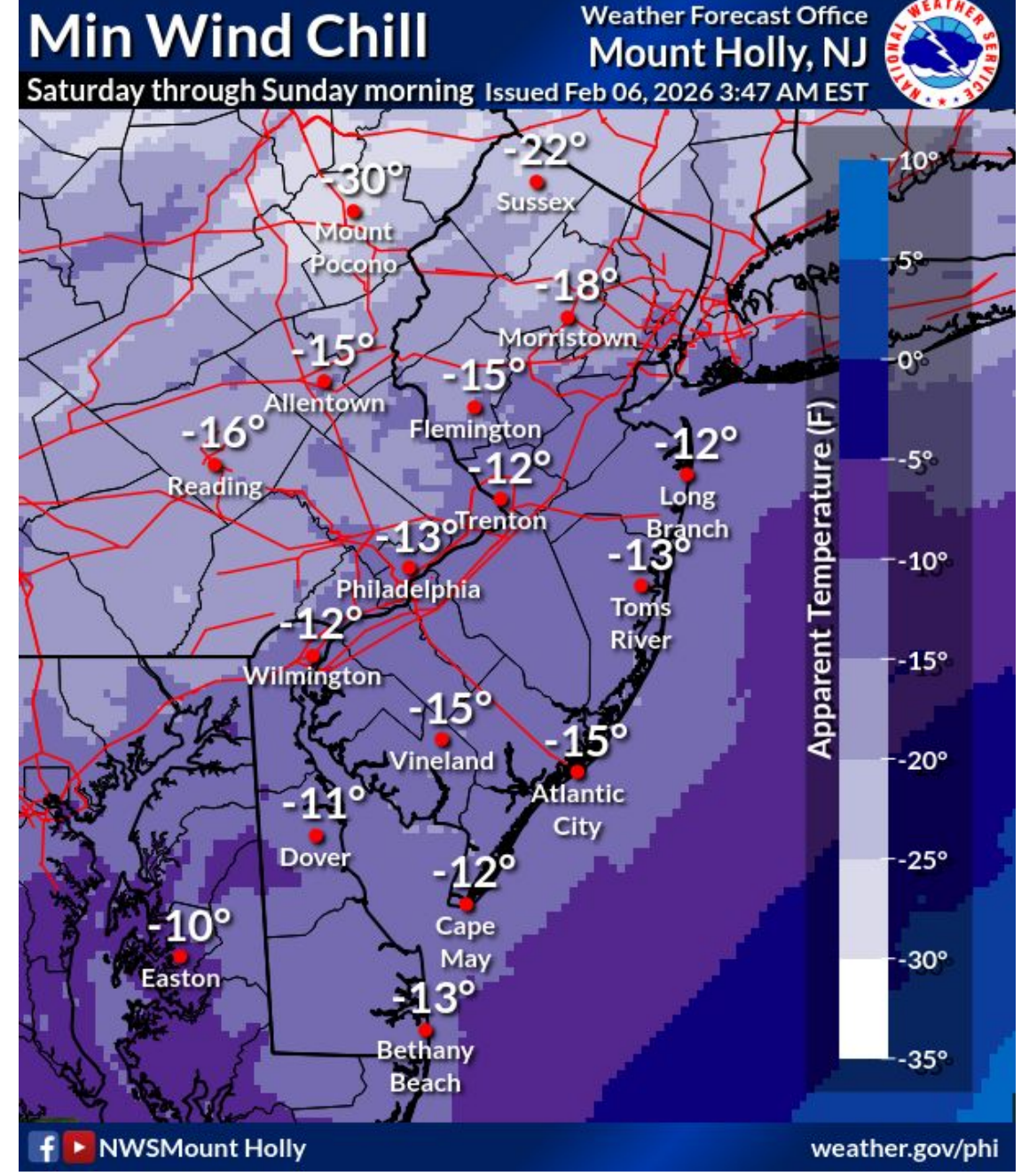
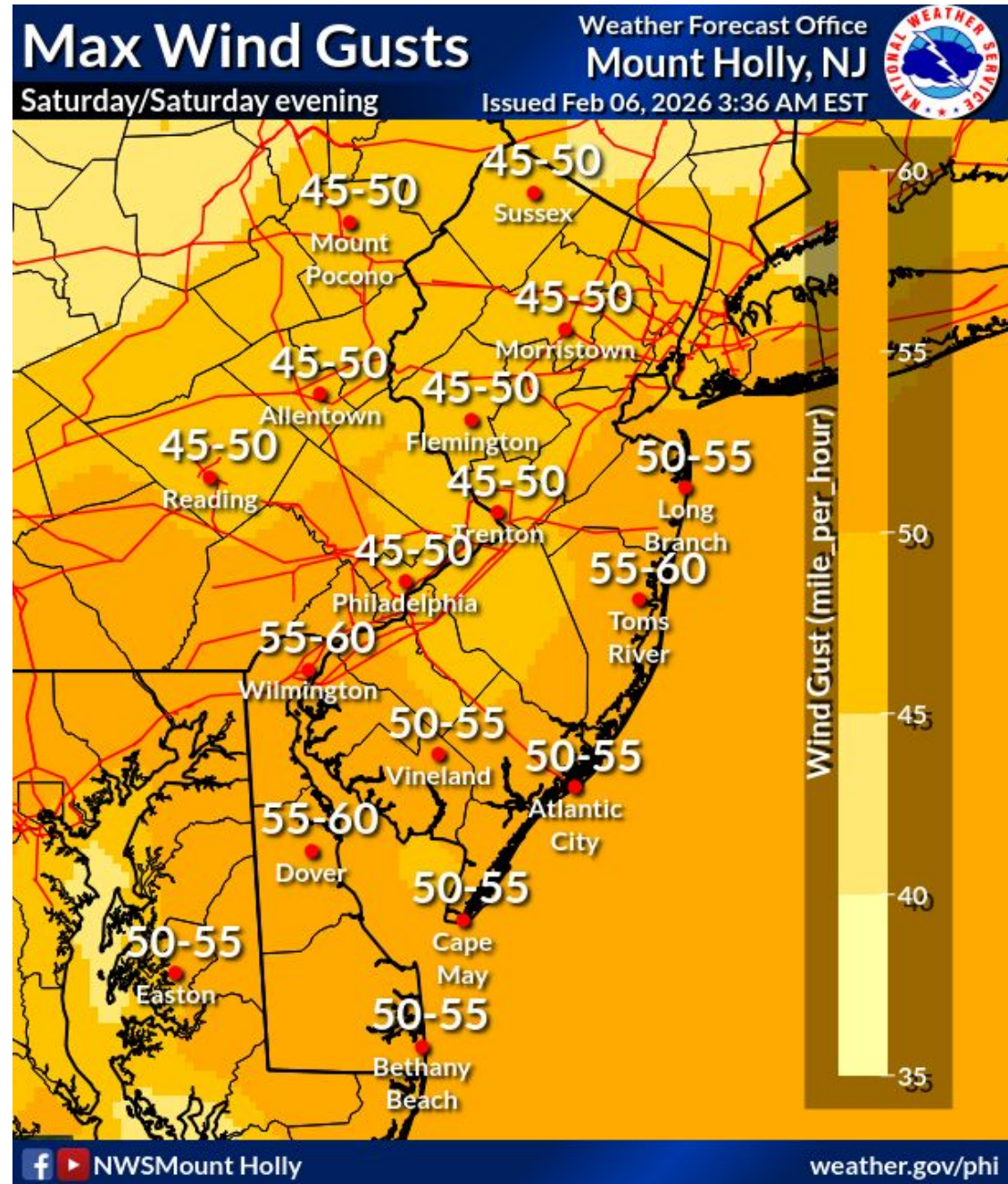




# Windy and Very Cold

February 6, 2026  
5:00 AM EST

Saturday through Sunday



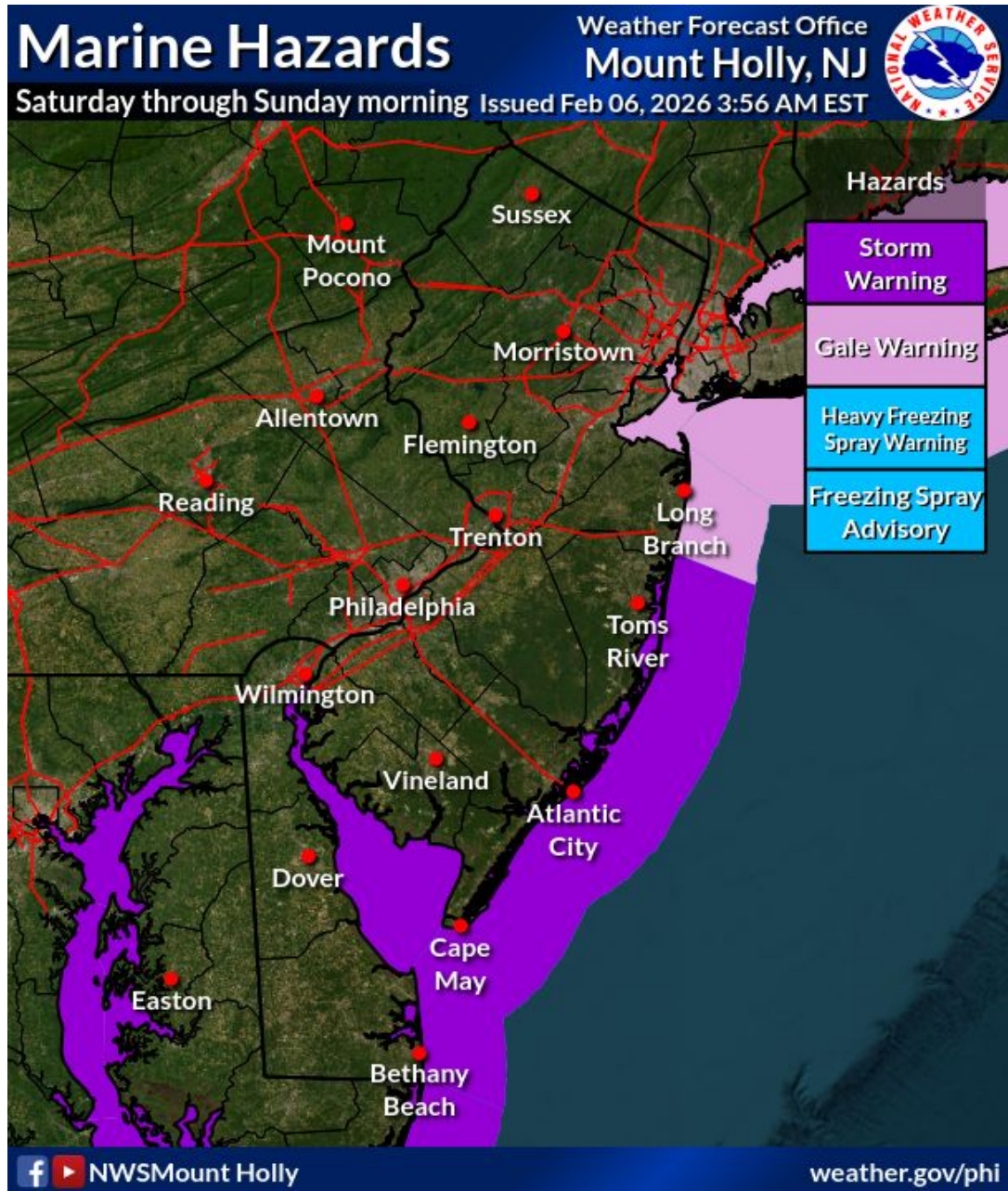


# Marine Hazards

February 6, 2026

5:00 AM EST

Saturday into Sunday



## Key Messages:

- Storm force winds are expected for all but northern NJ ocean waters, where gale force winds are expected. Northwest winds will increase to 30-40 kts, with gusts of 45-50 kts Saturday morning through Sunday morning. A **Storm Warning** and a **Gale Warning** are in effect for portions of the Atlantic and Delaware Bay coastal waters from 6 AM Saturday through 6 AM Sunday.
- Moderate to heavy freezing spray is expected. A **Heavy Freezing Spray Warning** is in effect for all Atlantic and Delaware Bay coastal waters from 6 AM Saturday through 6 AM Sunday.



National Oceanic and Atmospheric Administration

U.S. Department of Commerce

National Weather Service  
Philadelphia/Mount Holly



# 7 Day Temperature Forecast

February 6, 2026  
5:00 AM EST

## Temperature Forecast (°F)

	2/6	2/7	2/8	2/9	2/10	2/11	2/12	2/13	Maximum
	Fri	Sat	Sun	Mon	Tue	Wed	Thu	Fri	
Allentown, PA	High: 30 Low: 13	High: 26 Low: 5	High: 19 Low: 2	High: 26 Low: 3	High: 34 Low: 13	High: 36 Low: 20	High: 32 Low: 21	High: 34 Low: 18	36
Atlantic City, NJ	High: 34 Low: 22	High: 27 Low: 11	High: 22 Low: 6	High: 29 Low: 11	High: 35 Low: 19	High: 39 Low: 28	High: 35 Low: 26	High: 36 Low: 23	39
Dover, DE	High: 33 Low: 18	High: 27 Low: 9	High: 22 Low: 6	High: 29 Low: 10	High: 38 Low: 19	High: 43 Low: 27	High: 36 Low: 27	High: 37 Low: 23	43
Easton, MD	High: 35 Low: 17	High: 28 Low: 12	High: 22 Low: 7	High: 29 Low: 12	High: 39 Low: 20	High: 43 Low: 28	High: 38 Low: 28	High: 40 Low: 24	43
Georgetown, DE	High: 36 Low: 20	High: 28 Low: 10	High: 23 Low: 6	High: 30 Low: 11	High: 41 Low: 19	High: 46 Low: 27	High: 39 Low: 28	High: 40 Low: 23	46
Hackettstown, NJ	High: 31 Low: 8	High: 21 Low: 4	High: 18 Low: -1	High: 26 Low: 4	High: 34 Low: 11	High: 34 Low: 18	High: 32 Low: 20	High: 34 Low: 17	34
Mount Pocono, PA	High: 24 Low: 10	High: 19 Low: -1	High: 12 Low: -4	High: 21 Low: 2	High: 31 Low: 11	High: 31 Low: 18	High: 26 Low: 17	High: 30 Low: 15	31
Philadelphia, PA	High: 32 Low: 16	High: 27 Low: 9	High: 20 Low: 5	High: 26 Low: 8	High: 34 Low: 17	High: 38 Low: 25	High: 33 Low: 26	High: 34 Low: 21	38
Reading, PA	High: 31 Low: 13	High: 27 Low: 6	High: 20 Low: 3	High: 26 Low: 5	High: 35 Low: 15	High: 38 Low: 23	High: 33 Low: 23	High: 35 Low: 20	38
Toms River, NJ	High: 34 Low: 14	High: 25 Low: 8	High: 22 Low: 3	High: 27 Low: 7	High: 34 Low: 14	High: 39 Low: 23	High: 34 Low: 23	High: 37 Low: 19	39
Trenton, NJ	High: 32 Low: 14	High: 26 Low: 8	High: 20 Low: 4	High: 26 Low: 5	High: 33 Low: 13	High: 36 Low: 21	High: 33 Low: 23	High: 35 Low: 19	36
Wilmington, DE	High: 32 Low: 16	High: 26 Low: 9	High: 20 Low: 5	High: 27 Low: 8	High: 35 Low: 18	High: 39 Low: 25	High: 34 Low: 26	High: 35 Low: 21	39



Temperature Forecast (°F)

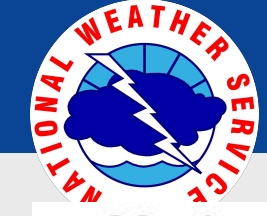
## Week 1 Forecast:

- Below normal temperatures continue.
- The bitterly cold conditions peak again this weekend before temperatures start to moderate some next week.
- For the latest forecast for your location, visit [www.weather.gov/phi](http://www.weather.gov/phi)

Created: 3 am EST Fri 2/6/2026 | Values are accumulations over the period beginning at the time shown.



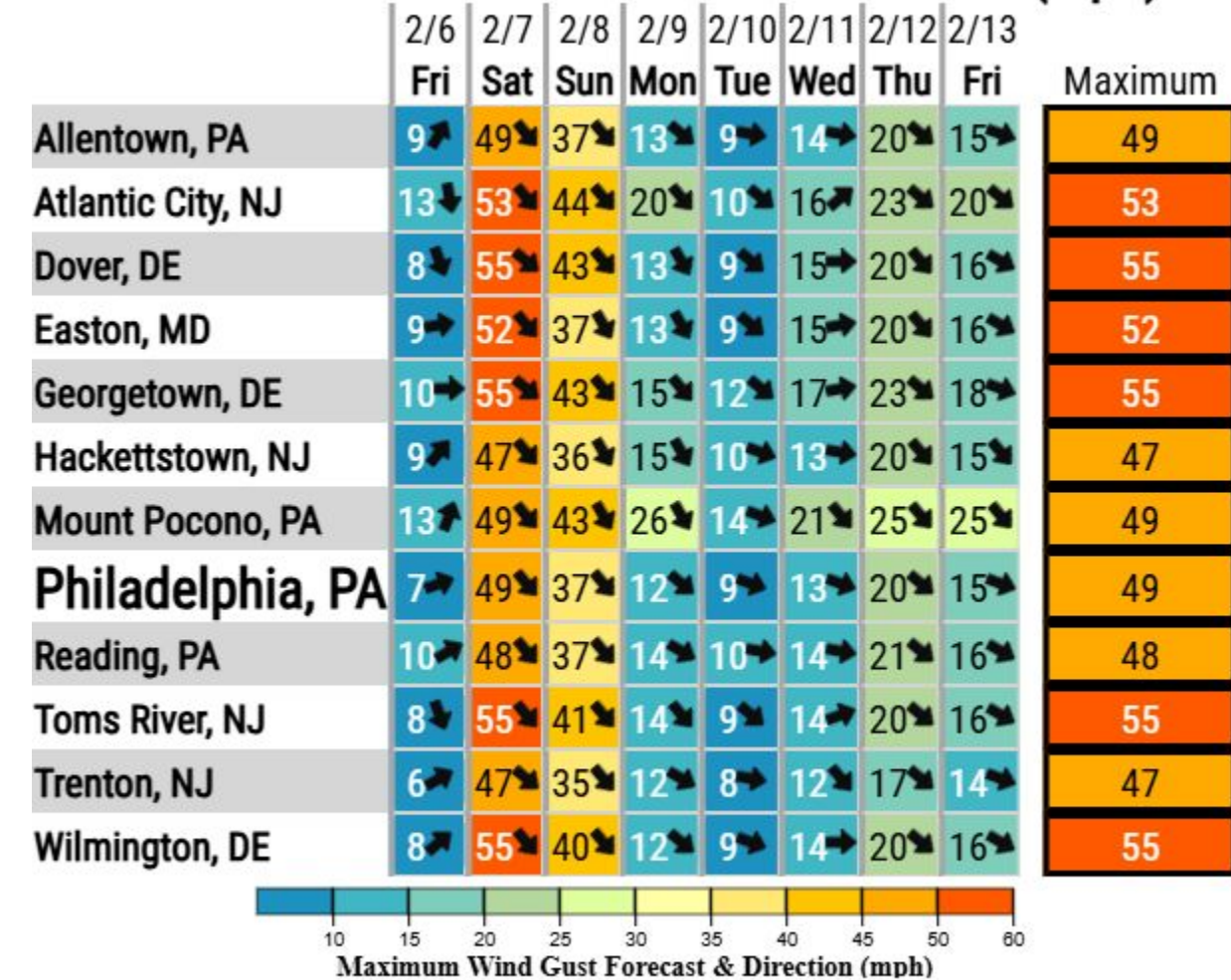




# Wind Forecast

February 6, 2026  
5:00 AM EST

## Maximum Wind Gust Forecast & Direction (mph)

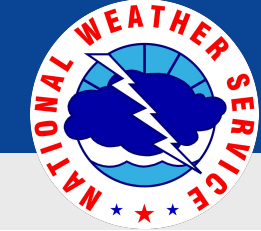


## Week 1 Wind Forecast:

- Windy conditions are expected to develop overnight Friday night and continue into Saturday night. Breezy conditions are also likely on Sunday, however winds won't be as strong as Saturday.
- For the latest forecast for your location, visit [www.weather.gov/phi](http://www.weather.gov/phi)

Created: 3 am EST Fri 2/6/2026 | Values are maximums over the period beginning at the time shown.

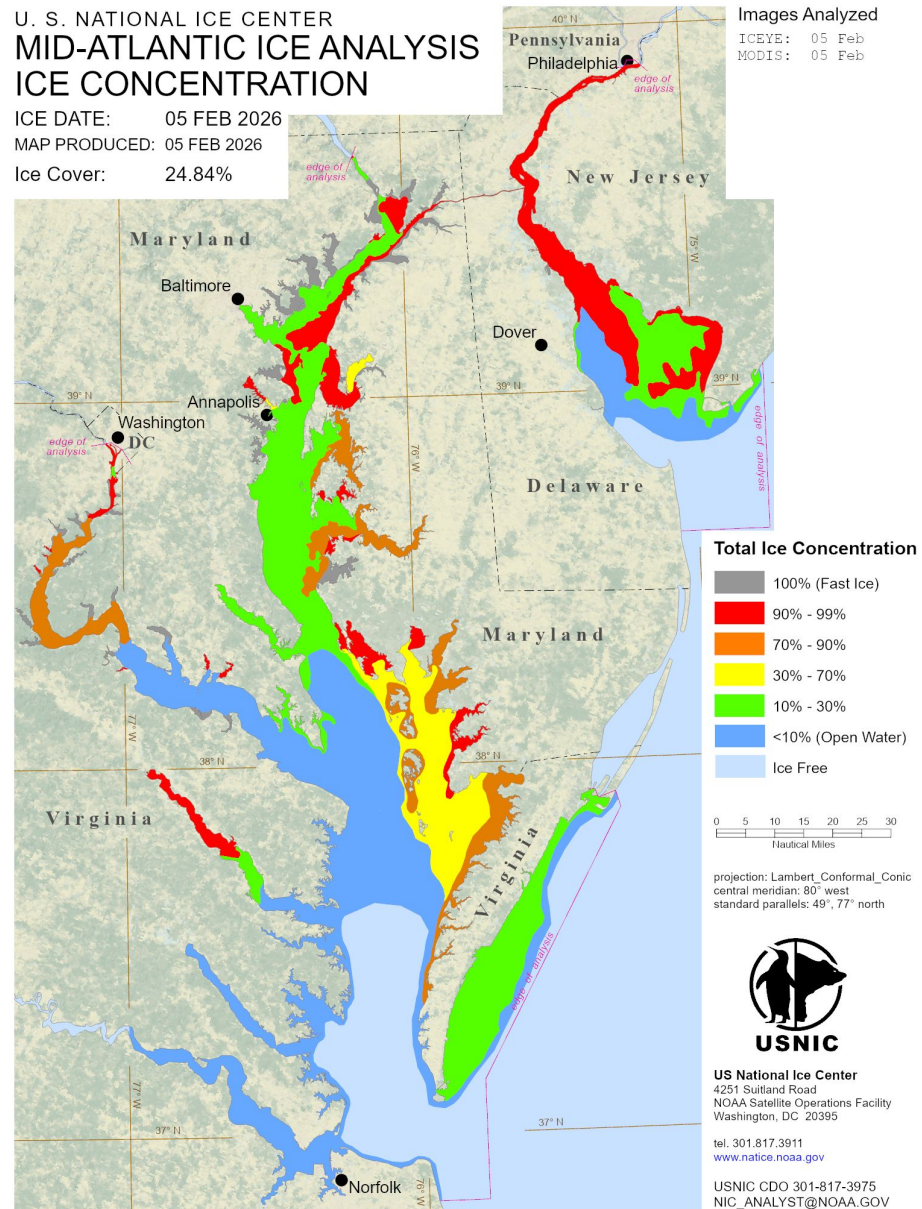




# Mid-Atlantic Ice Analysis

February 6, 2026  
5:00 AM EST

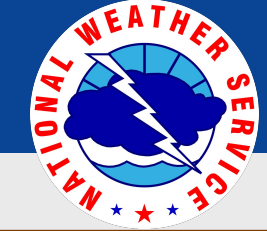
From the U.S. National Ice Center



## Latest Mid Atlantic Ice Analysis:

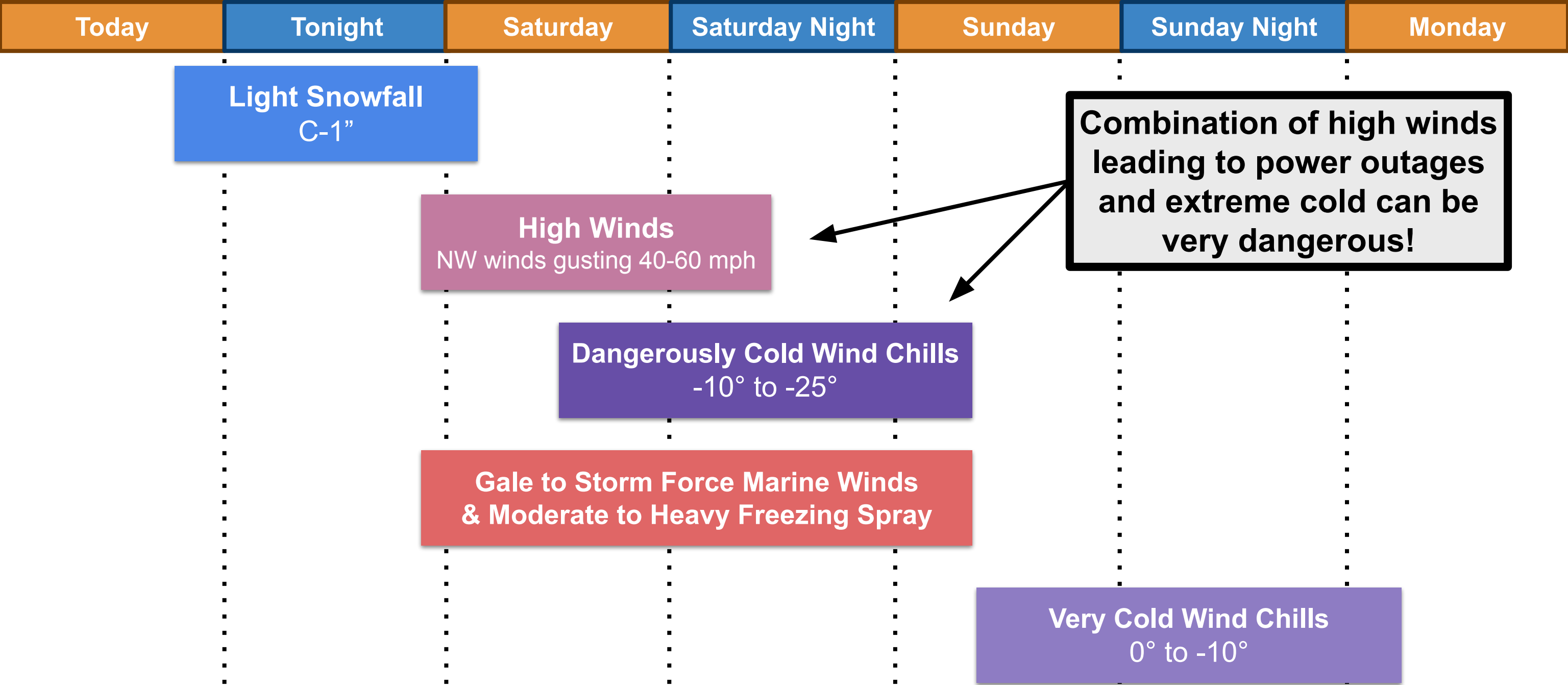
- Marine ice continues to expand in coverage. This trend will continue as more arctic air arrives this weekend.
- U.S. National Ice Center updates this map every weekday (typically in the afternoon).
- Marine and river ice will persist or expand through this weekend into early next week along the Atlantic coast, Raritan Bay, Delaware Bay, and Delaware River. Daytime temperatures warming well into the 30s to low 40s by the end of next week could begin to support some breaking up or melting of the ice.
- The latest analysis and forecast is available at <https://usicecenter.gov/Products/MidAtlanticHome>

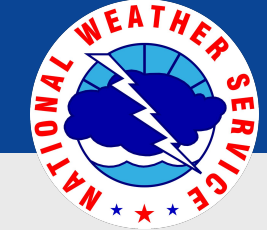




# Timeline of Weekend Impacts

February 6, 2026  
5:00 AM EST





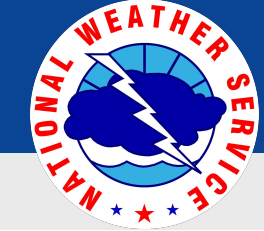
# Summary of Impacts

February 6, 2026  
5:00 AM EST

## Key Messages:

- An **Extreme Cold Warning** is now in effect for the entire region for Saturday into Sunday. **Widespread sub-freezing temperatures are expected to persist through early next week.** *The longevity of these sub-freezing temperatures will continue to increase the risk of impacts, including to people and infrastructure.*
- A **High Wind Warning** is now in effect for Delmarva, far southern NJ, and much of the NJ Coastal Plain for Saturday. A **Wind Advisory** is now in effect for the southern Poconos, the rest of New Jersey, and southeast Pennsylvania for Saturday as well. Strong northwest winds will develop early Saturday morning and continue into Saturday night. Gusts up to 60 mph are expected for the Delmarva, far southern NJ, and much of the Coastal Plain, with gusts 40-50 mph likely elsewhere. For marine areas, gusts of 40-50 kt are expected.
- **Minimum wind chill values between -10° and -25°** by early Sunday morning. ***The combination of high winds leading to power outages with extreme cold can be very dangerous!***
- There is a 40 to 70% chance of light snow beginning this evening and continuing through the overnight hours. **An arctic front may produce snow squalls early Saturday morning.** Snow amounts are expected to range from a coating to around an inch, though gusty winds and low visibilities within any snow squalls could lead to dangerous travel.





# Contact and Next Briefing Information

February 6, 2026  
5:00 EST

For Delaware, New Jersey, Eastern Pennsylvania, and Eastern Shore of Maryland

## Contact Information

### Web

→ [weather.gov/phi](https://weather.gov/phi)

### Phone

→ (609)-261-6600

### Facebook

→ [NWSMountHolly](https://www.facebook.com/NWSMountHolly)

### X

→ [@NWS\\_MountHolly](https://twitter.com/NWS_MountHolly)



## Next Briefing

- By 5:00 PM February 6, 2026
- Method: Email



## Disclaimer

- Information contained in this briefing is time-sensitive
- Do Not Use After: 5:00 PM February 6, 2026

