

**654 Bethlehem Pike**  
Flourtown, PA

**For Sale**

- **Corner Lot**
- **1.83 Acres**
- **79,584 SF**

**List Price**  
**\$525,000**

**COLONIAL SCHOOL DISTRICT, MONTGOMERY COUNTY**



**ABOUT  
THIS  
LOT**

Located in desirable Flourtown, this lot is situated in a gorgeous park-like setting between Historic Saint Miriam's and Saint Thomas churches. The surrounding property is a truly special oasis, complete with lush trees and foliage. You will find both serenity and convenience in this stunning locale, with the top-quality shops and restaurants of Bethlehem Pike just minutes away. This lot is located on the section of Church Road that can tie into the public sewer, no private septic is needed.



For more information:  
**Thomas Bond**  
tbond@geisrealty.com

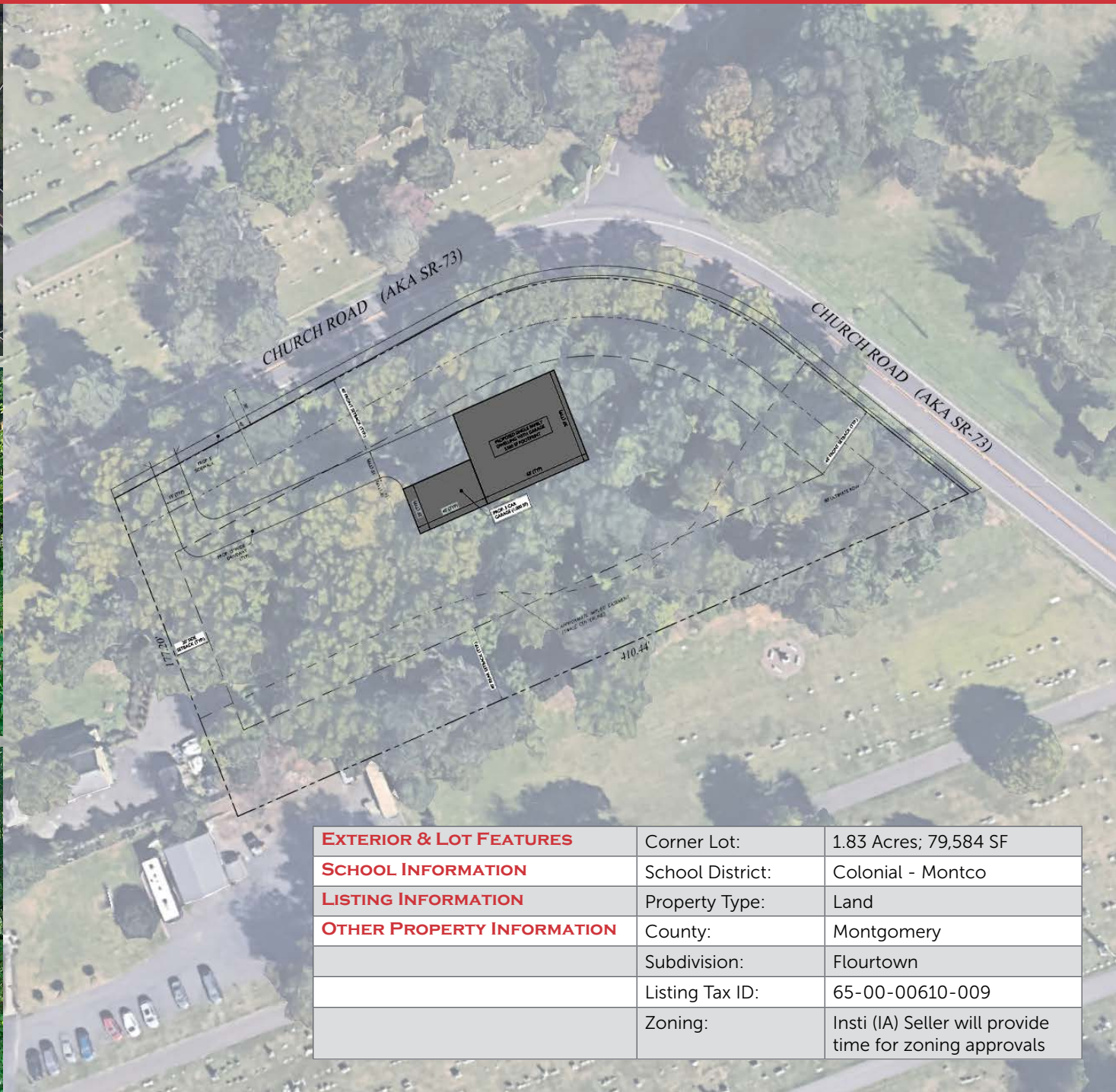
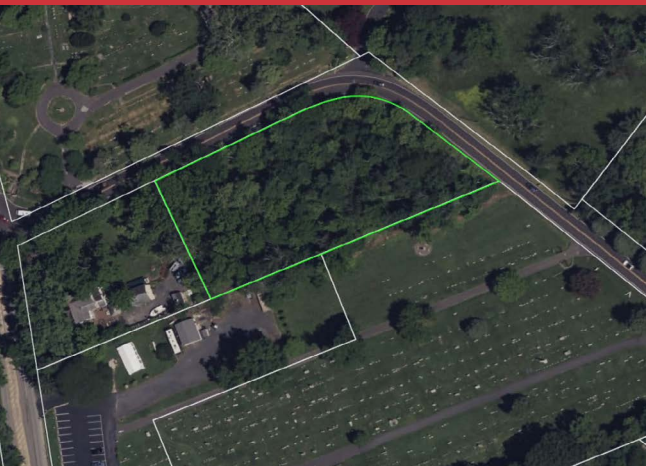
Duane Morris Plaza, 30 South 17th Street, Suite 210, Philadelphia, PA 19103

[geisrealty.com](http://geisrealty.com)

No warranty or representation, express or implied, is made as to the accuracy of the information contained herein, and the same is submitted subject to errors, omissions, change of price, rental or other conditions, prior sale, lease or financing, or withdrawal without notice, and of any special listing conditions imposed by our principals no warranties or representations are made as to the condition of the property or any hazards contained therein are any to be implied.



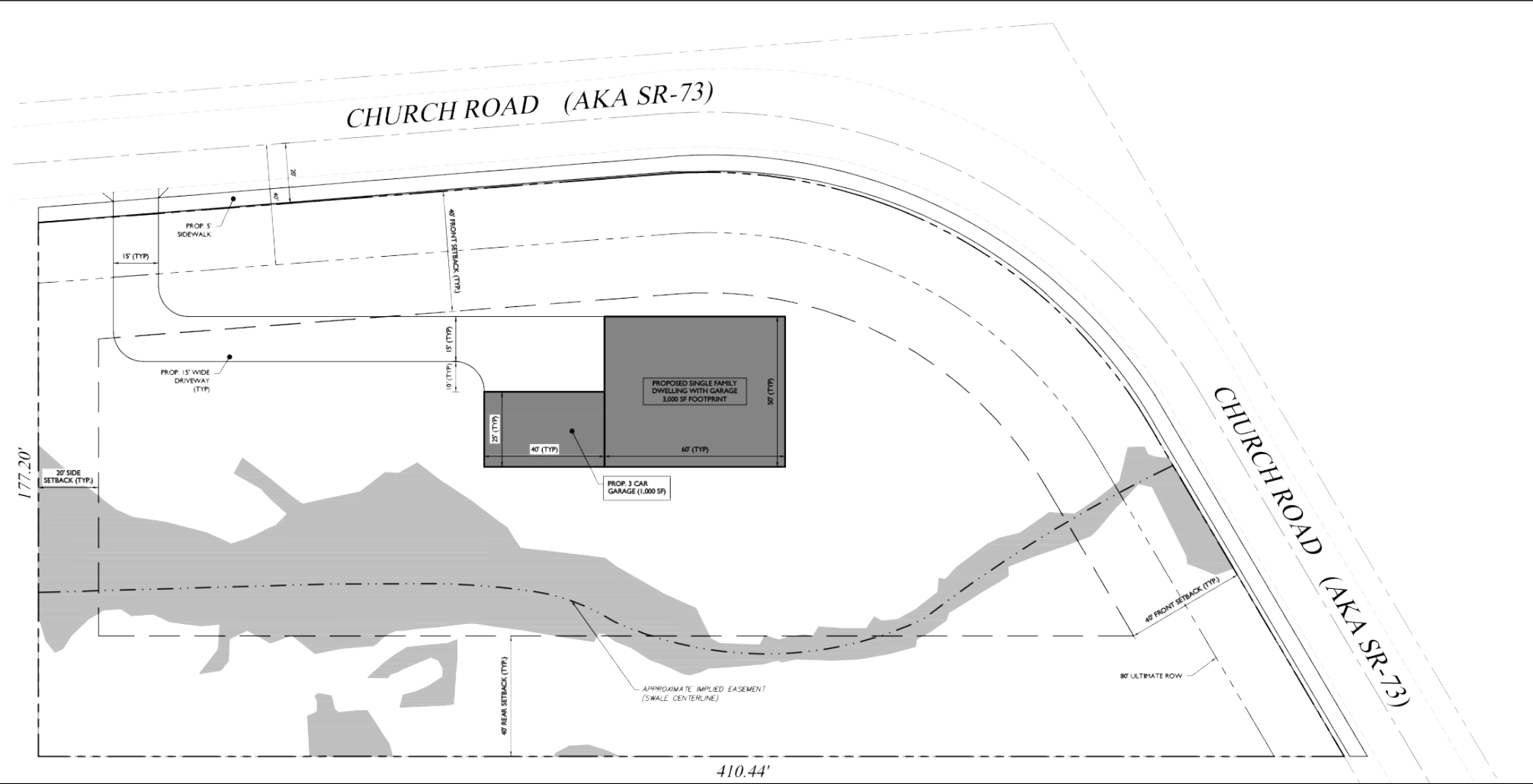
# 654 Bethlehem Pike | Flourtown, PA



EXTERIOR & LOT FEATURES	Corner Lot:	1.83 Acres; 79,584 SF
SCHOOL INFORMATION	School District:	Colonial - Montco
LISTING INFORMATION	Property Type:	Land
OTHER PROPERTY INFORMATION	County:	Montgomery
	Subdivision:	Flourtown
	Listing Tax ID:	65-00-00610-009
	Zoning:	Insti (IA) Seller will provide time for zoning approvals



Site Plan



## Comparables

### Active

	Address	Asking Price	Size AC/SF
1	116 Hillcrest Ave Philadelphia	\$524,900	0.34 AC 14,946 SF
2	180 Hillcrest Ave Philadelphia	\$539,900	0.39 AC 16,929 SF

### Sold

	Address	Sold Price/Date	Size
3	6650 Germantown Ave Philadelphia	\$625,000	0.14 AC 6,226 SF
4	1205 Carriage Cir Lower Gwynedd	\$582,500 1/26/24	1.10 AC 47,929 SF
5	1050 Skippack Pike Blue Bell	\$475,000 9/6/23	1.03 AC 45,012 SF
6	29 N Spring Garden St Ambler	\$600,000 12/28/23	0.35 AC 15,150 SF
7	6903 Germantown Ave Philadelphia	\$420,000 7/3/23	0.18 AC 7,609 SF

### Subject Property

