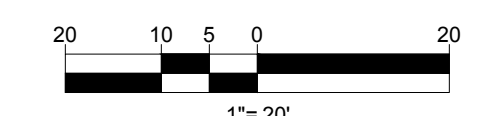
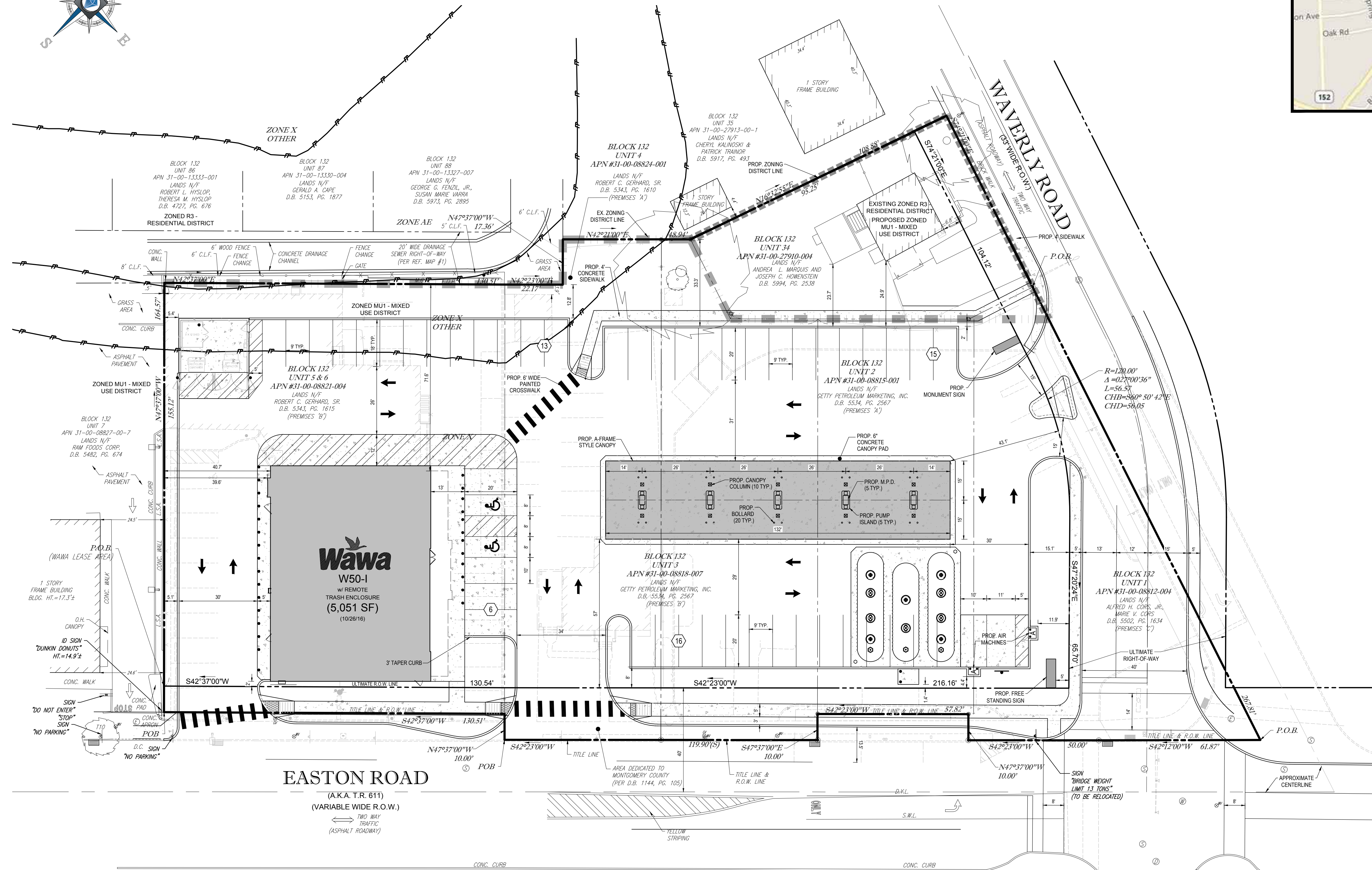


LOCATION MAP
1"=800'



BOHLER ENGINEERING

SITE CIVIL AND CONSULTING ENGINEERING
 LAND SURVEYING PROGRAM MANAGEMENT LANDSCAPE ARCHITECTURE
 SUSTAINABLE DESIGN PERMITTING SERVICES LAND REFORMATION SERVICES
 CONSULTING SERVICES

PHILADELPHIA, PA
 PITTSBURGH, PA
 NEW YORK, NY
 WASHINGTON, DC

ATLANTA, GA
 TAMPA, FL
 NORTHERN VIRGINIA
 SOUTHERN MARYLAND
 SOUTH EASTERN PA
 BEHNSHORE BEACH, DE
 WASHINGTON, DC

1-800-242-1776
 www.BohlerEngineering.com

REVISIONS

REV	DATE	COMMENT	BY
1	07/12/19	REV'D PER CLIENT COMMENT	MAS

CALL BEFORE YOU DIG!

PENNSYLVANIA LAW REQUIRES 3 WORKING DAYS NOTICE FOR CONSTRUCTION PHASE AND 10 WORKING DAYS IN DESIGN STAGE - STOP CALL

PA1
 1-800-242-1776

POCS SERIAL NUMBER
 20180751828

NOT APPROVED FOR CONSTRUCTION

PROJECT No.: PC181015
 DRAWN BY: M.A.M.
 CHECKED BY: G.J.H.
 DATE: 2019.07.03
 SCALE: 1"=20'
 CAD I.D.: PC181015 CONCEPT G-1

PROPOSED WAWA FOOD MARKET

SOUTH EASTON ROAD & WEST WAVERLY ROAD
 MONTGOMERY COUNTY
 CHELTENHAM TOWNSHIP
 PENNSYLVANIA
 19038

BOHLER ENGINEERING

1600 MANOR DRIVE, SUITE 200
 CHALFONT, PENNSYLVANIA 18914
 Phone: (215) 996-9100
 Fax: (215) 996-9102
 www.BohlerEngineering.com

G.J. HARTMAN

PROFESSIONAL ENGINEER
 PENNSYLVANIA LICENSE No. PE076453

SHEET TITLE:
CONCEPT PLAN G-1

SHEET NUMBER:
 1
 OF 2

REVISION 1 - 2019.07.12

R:\181015\DRAWINGS\CONCEPTS\CONCEPT PLAN G-1\REV-1\PC181015 CONCEPT G-1.dwg - JAVOUT, 01/19/2019